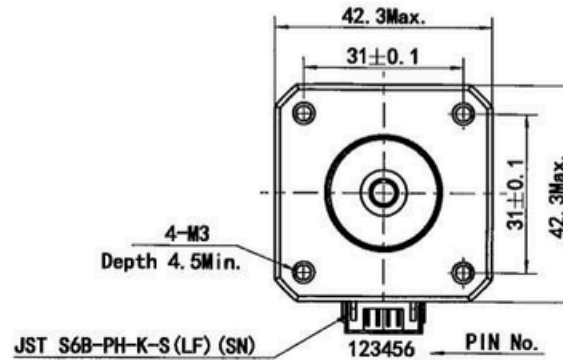
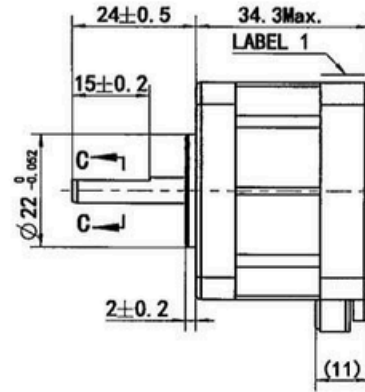
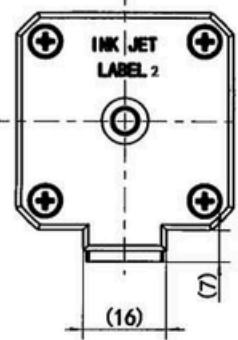
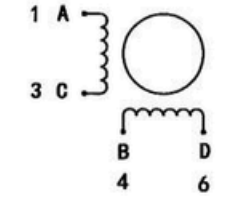


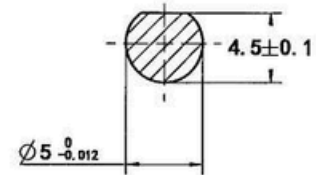
MS17HD4P4065



Wiring Diagram



C-C (3:1)



Exciting Sequence vs. Direction of Rotation

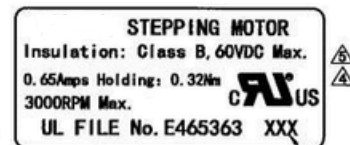
STEP	A	B	C	D	CCW
1	+	+	-	-	↑
2	-	+	+	-	
3	-	-	+	+	
4	+	-	-	+	

Clockwise view from mounting side

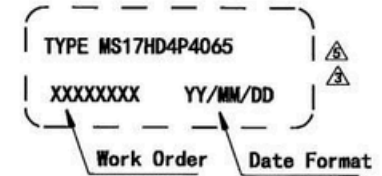
Hybrid Stepping Motor Specifications

1. Number of Phase	2
2. Step Angle	1.8°
3. Rated Voltage	5.655 V DC
4. Rated Current	0.65 Amp
5. Holding Torque	0.32 Nm Typ. (Two phase on/rated current)
6. Phase Resistance	8.7 ohm±10% (20°C)
7. Phase Inductance	15.4 mH±20% (1kHz 1V rms)
8. Rotor Inertia	38 gcm ²
9. Motor Weight	0.21 kg
10. Insulation Class	B (130°C)

Label 1 Detail



Label 2 Detail



REV.	REVISION RECORD	DATE	UNLESS OTHERWISE SPECIFIED	NAMES	SIGNATURE	DATE	Drawing No: 4611110008895	Rev. E1	SCALE: 1:1	Sheet 1 of 1
E1	ECR:23-317	2023.03.25	0.1mm First angle method	Approve						
E0	Update nameplate	2017.04.24	Tolerances for linear and angular dimensions without individual tolerance indications GB/T 1804-m eqv ISO 2768-1:m	Standardize						
D0	306mNm Min, change the nameplate	2013.01.24		Process Review						
C0	340 mNm Min.	2012.11.07	Geometrical tolerance for features without individual tolerance indications GB/T 1184-K eqv ISO 2768-2:K	Check						
B0	9.1 ohm, 16.5mH, 5.915V, 310mNm	2012.03.12		Design						
A0	Original revision	2011.07.18								